

**TREILLOGY**

# A NEW PERSPECTIVE

WE BELIEVE that architecture and design can positively change the lives of people who experience them. Done well, buildings can transform the way you live, work and play. You begin to experience everything in a new way, with more optimism and renewed energy.

Trilogy is that kind of place.

It's a landmark sky-rise destination at the heart of Limassol's seafront; somewhere to discover new ideas and people, inspire fresh opportunities and rejuvenate in a peaceful sanctuary.

It is place for togetherness - an energised community, living life with an upbeat view of the future. That's our version of positive change, one that shifts perspective and offers renewed vitality.





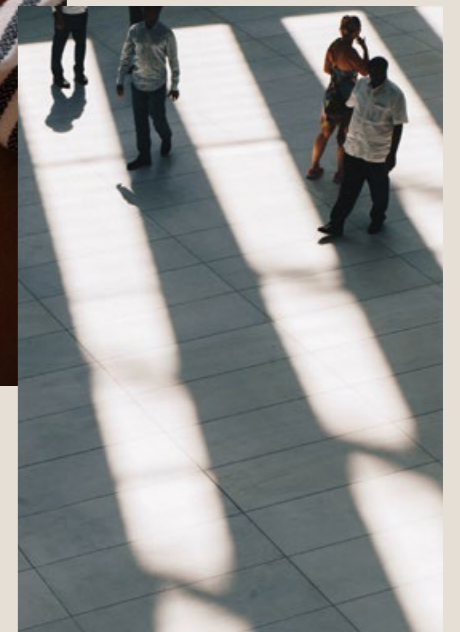
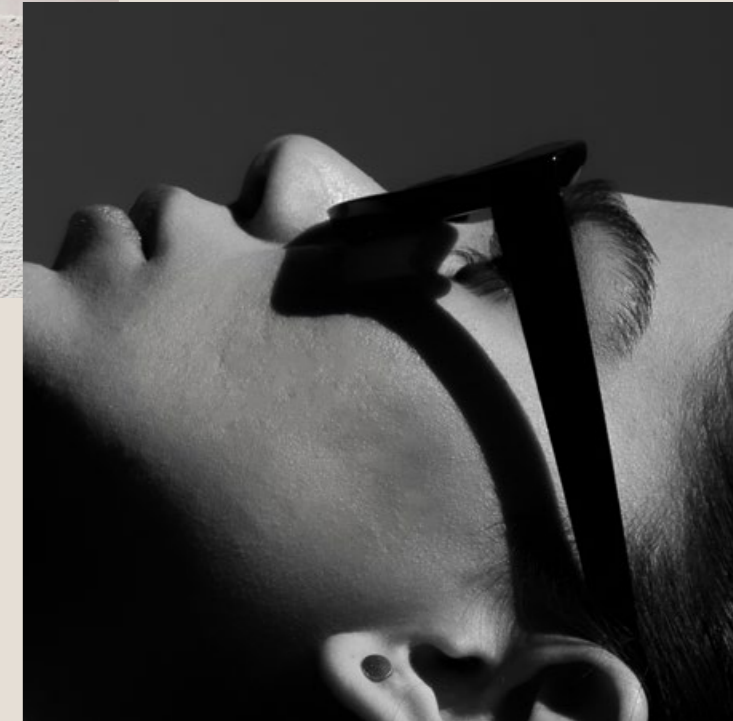
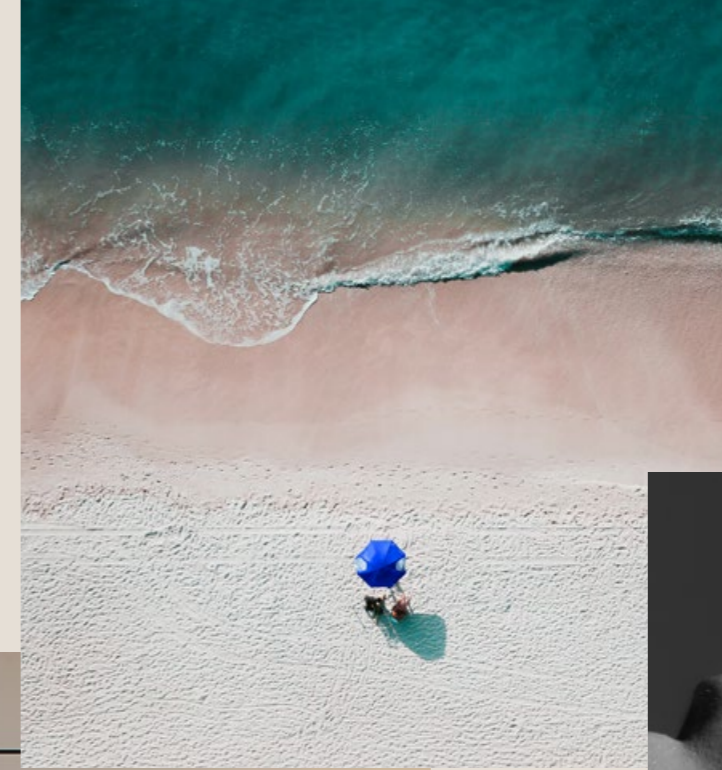
## FROM VISION TO REALITY



# THE TRILOGY EXPERIENCE

LOCATION  
DESIGN  
COMMUNITY  
RESIDENCES  
FACILITIES  
SERVICES  
REPUTATION

There is nothing quite like Trilogy.  
It's a unique combination of luxurious  
beachfront living and vibrant urban energy.  
It's an extraordinary destination;  
an exceptional opportunity.





## A DESTINATION WORTH THE JOURNEY

THE TRILOGY EXPERIENCE has been designed on the most breathtaking canvas, somewhere between the island's spectacular mountain peaks, beautiful beaches and cloudless skies. Cyprus has it all. It's the perfect location for a second home, permanent residence or sound property investment. All at the buzzing crossroad of three continents.

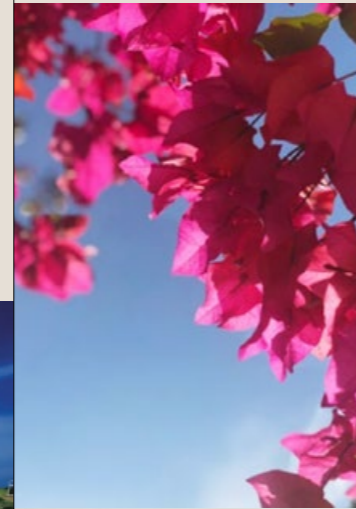
# LOCATION

ON THE SOUTH COAST OF CYPRUS, lies a city of diversity and urban seafront living. A hub of business, leisure and activity stretching along a 17km coastline of azure water and blue flag beaches. And right in the heart of it stands Trilogy.

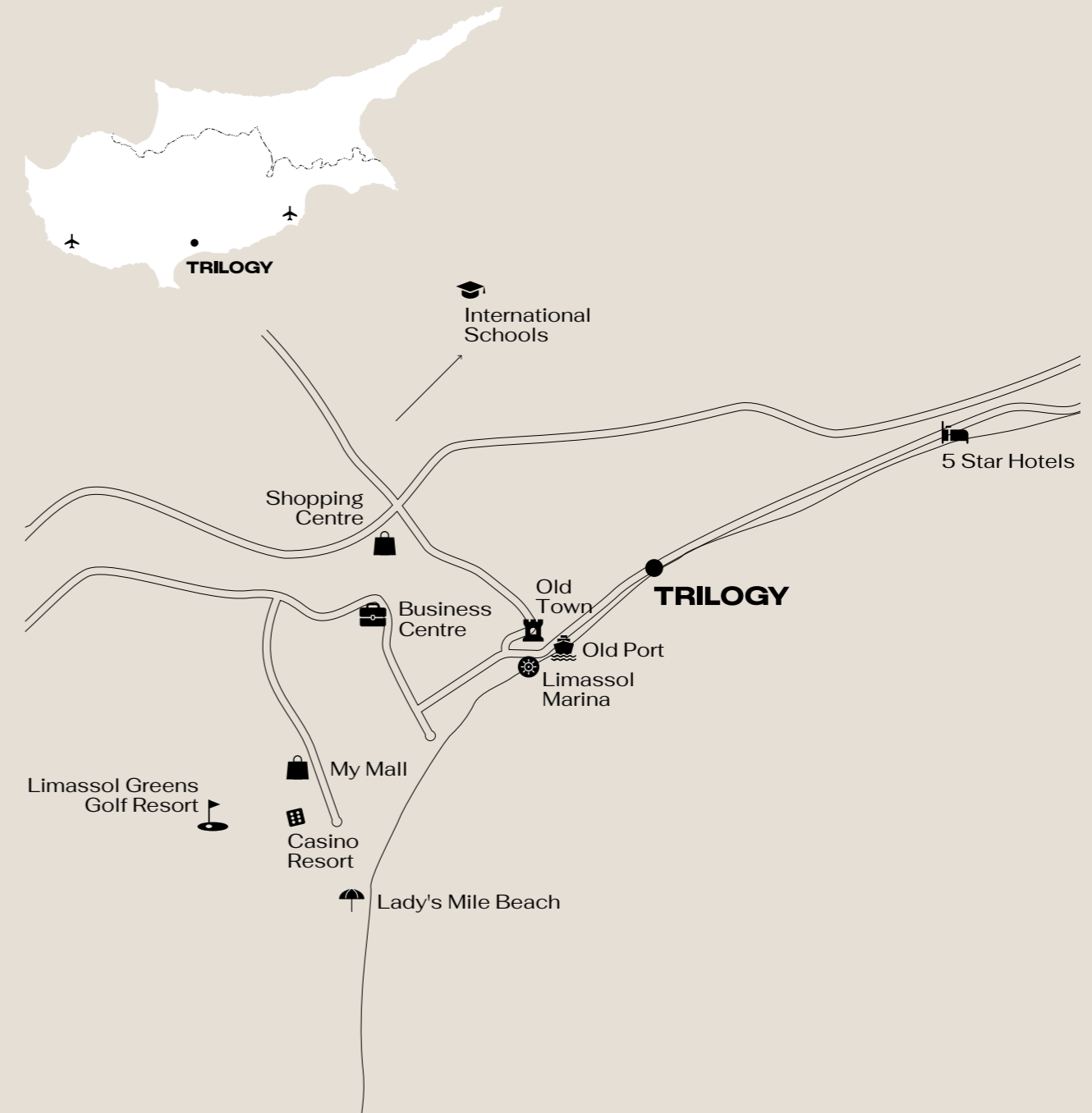


# WE CHOSE THE BEST LOCATION, THEN BETTERED IT

OUR GREATEST ASSET is the idyllic location, combining a laid-back beachfront vibe with the energy of Limassol's city centre. Trilogy is at the heart of it all – everything that is desirable and fabulous about the Mediterranean way of life.



# TO ENJOY LIFE TO THE FULL, START HERE



LIMASSOL is a city renowned for a great quality of life and Trilogy is perfectly placed to make the most of it. Sports and cultural venues, great restaurants, parks, the city's landmarks and the island's airports are all nearby.



## CREATED FOR LIVING

IT'S THE ULTIMATE DESTINATION, unrivalled in Cyprus and throughout the wider Mediterranean. Private retreats and an outdoor oasis pamper residents with extensive leisure facilities including gyms, swimming pools, lush landscaped gardens and spas. There's a generous public plaza with restaurants and premium retail to add extra vitality, and because Trilogy has been created and managed by the same team behind the renowned Aphrodite Hills Golf Resort, Limassol Marina and The Oval, you know you're in good hands.

# DESIGN





**CREATIVELY  
IMAGINED,  
STUNNINGLY  
REAL**

TRILOGY IS A LANDMARK construction project in the literal sense, but also in how it has been achieved. We reached around the world to bring the best architects, construction teams and designers together, because the best demands the best. There's a beauty and integrity in showing photographs of the building in mid-construction. Not to mention the authentic pride we feel in demonstrating our innovation.



## MASTERPLAN

### WEST TOWER

- 67 Apartments
- 52 Offices

#### RETREAT (Levels 17-18)

- Total area 1,289m<sup>2</sup>
- Indoor area 655m<sup>2</sup>
- Outdoor area 634m<sup>2</sup>

- Level 17: Multi-purpose function room, cinema room & lounge
- Outdoor pool 8.5m x 7.5m, 64m<sup>2</sup>
- Level 18: Gym, sauna, steam room & treatment area
- Indoor pool 12m x 3.8m, 46m<sup>2</sup>

### EAST TOWER

- 125 Apartments

#### RETREAT (Levels 11-12)

- Total area 1,105m<sup>2</sup>
- Indoor area 750m<sup>2</sup>
- Outdoor area 355m<sup>2</sup>

- Level 11: Play & seating area, lounge & cinema room
- Outdoor pool 11m x 5.5m, 60m<sup>2</sup>
- Level 12: Gym, sauna, steam room & treatment area
- Indoor pool 13m x 3.5m, 46m<sup>2</sup>

### NORTH RESIDENCES

- 76 Apartments

#### RETREAT (Oasis level)

- Accessible to all residents (including West & East Tower)
- Total area 1,000m<sup>2</sup>

- Crèche & lounge
- Gym & training area 150m<sup>2</sup>
- Indoor pool 16m x 5.8m, 105m<sup>2</sup>
- Treatment rooms & thermal spa across 280m<sup>2</sup> with steam bath, sauna & relaxation areas

### THE OASIS

- 6,700m<sup>2</sup>

- Adult swimming pool
- Pool bar
- Children's swimming pool & play area
- Landscaped gardens

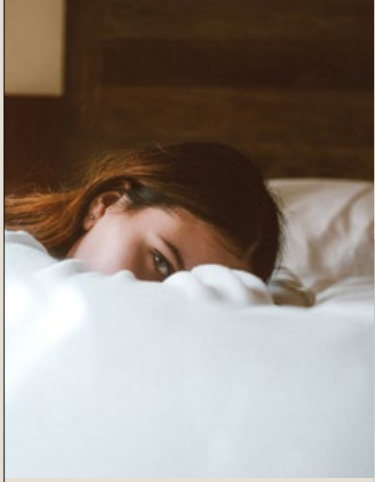
### THE PLAZA

- 6,850m<sup>2</sup>

- Drop-off zone opposite
- Trilogy managed beach
- Restaurants & bars
- Shops & hair salon

### PARKING

- Private spaces: 581
- Public spaces: 312



## A NEW PERSPECTIVE CHANGES EVERYTHING

No one has EXPERIENCED LIMASSOL this way before. The views from Trilogy are spectacular, but its unique character is not defined by scale and height alone.

It's also about the way it inspires and reveals new, exciting ways for people to enjoy life. It's a thriving, unique community of different cultures, each adding their individual influence and energy.







## BEAUTY ON THE INSIDE

Viewed from the outside, Trilogy represents beachfront living on a GRAND SCALE.

Step inside and you'll quickly discover how smaller details also set us apart.

Every interior design decision has been considered at length, resulting in exquisite choices that provide effortless delight. Tactile, indulgent and visceral, Trilogy thrills on every level.

A group of people are silhouetted against a bright sunset sky. In the center, a person holds up a smartphone high above their head, framing the sun. To the left, another person is also taking a photo with their phone. The overall mood is communal and celebratory.

## BE PART OF SOMETHING SPECIAL

TRILOGY IS A THRIVING, DIVERSE community that exists in harmony with the city, beachfront and local residents. It's an innovative, cosmopolitan destination – a place for togetherness and for living life with an optimistic vision of the future.

# COMMUNITY



## THE PLAZA

TRILOGY'S PLAZA has a personality and vibe unlike anywhere else. It's home to a collection of restaurants, bars and shops: an inviting hub and the beating heart of our unique destination. There's a great sense of place, belonging and soul, as well as a fluid, dynamic attitude that means when everyone gets together, everyone gets along.

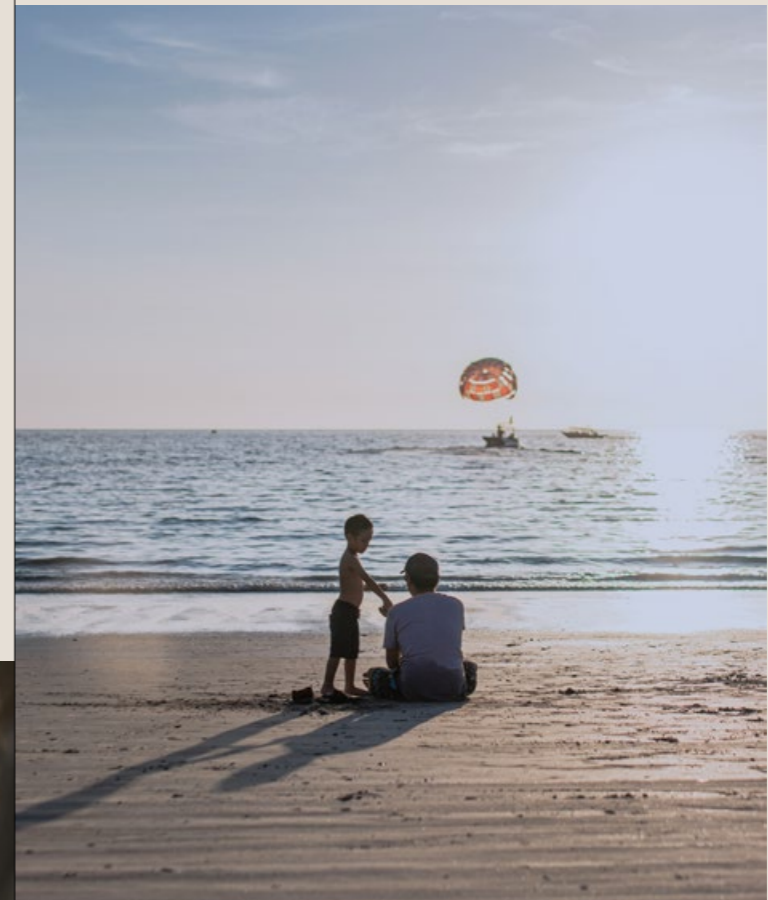






# THE BEACH

THE SANDY BEACH in front of Trilogy offers priority bookings to residents and guests; a Mediterranean canvas for evening strolls, morning runs and endless relaxation. Drinks and snacks are served direct to your lounger.



## **YOUR HOME IN THE SKY**

TRILOGY'S APARTMENTS blend the aspirational dream of high-end beachfront living and the sophistication of urban cool, with astonishing design flair and unsurpassed levels of finish. These are homes to be desired and coveted by many, but loved and lived in by the lucky few.

# **RESIDENCES**





## YOUR SKY-RISE HAVEN

LAYOUTS are generously proportioned and meticulously designed with spacious living areas and carefully curated natural materials and finishes.

EACH RESIDENCE at Trilogy is a statement of discerning taste and understated wealth. Arclinea kitchens designed by Antonio Citterio exclusively for Trilogy, come complete with the timeless Gaggenau experience and other adorned world-renowned brands such as Bosch, Dornbracht and Villeroy & Boch. This is a combination of spectacular layouts, unrivalled sea views and the highest standards of finish.



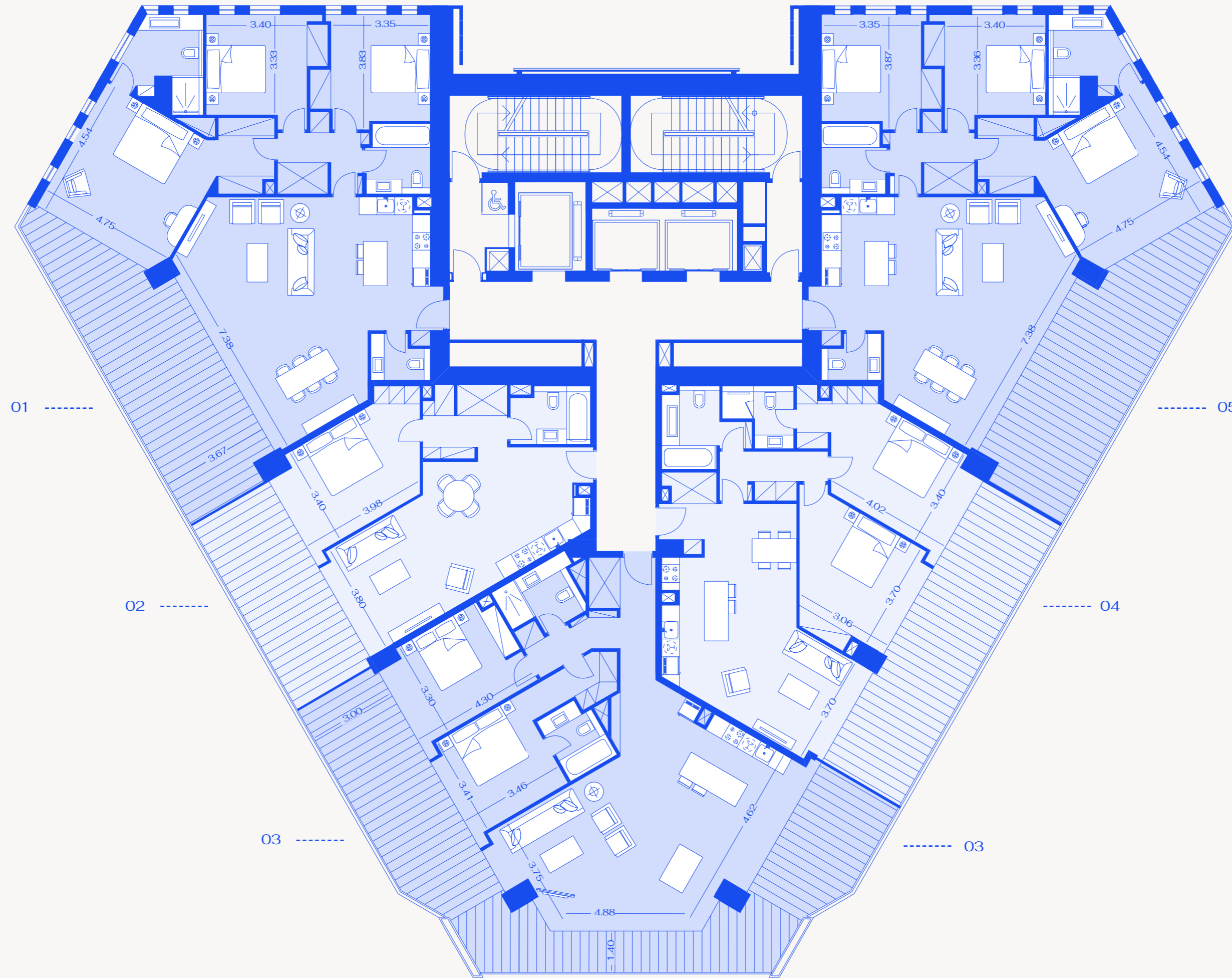
## **RESIDENCES IN DETAIL**

EVERY APARTMENT is imaginatively designed and impeccably finished, with stunning views across the Mediterranean from large, covered terraces. Layouts are distinguished by detail and optimised for a seamless living experience.

# **EL OORPLANS**

# WEST TOWER

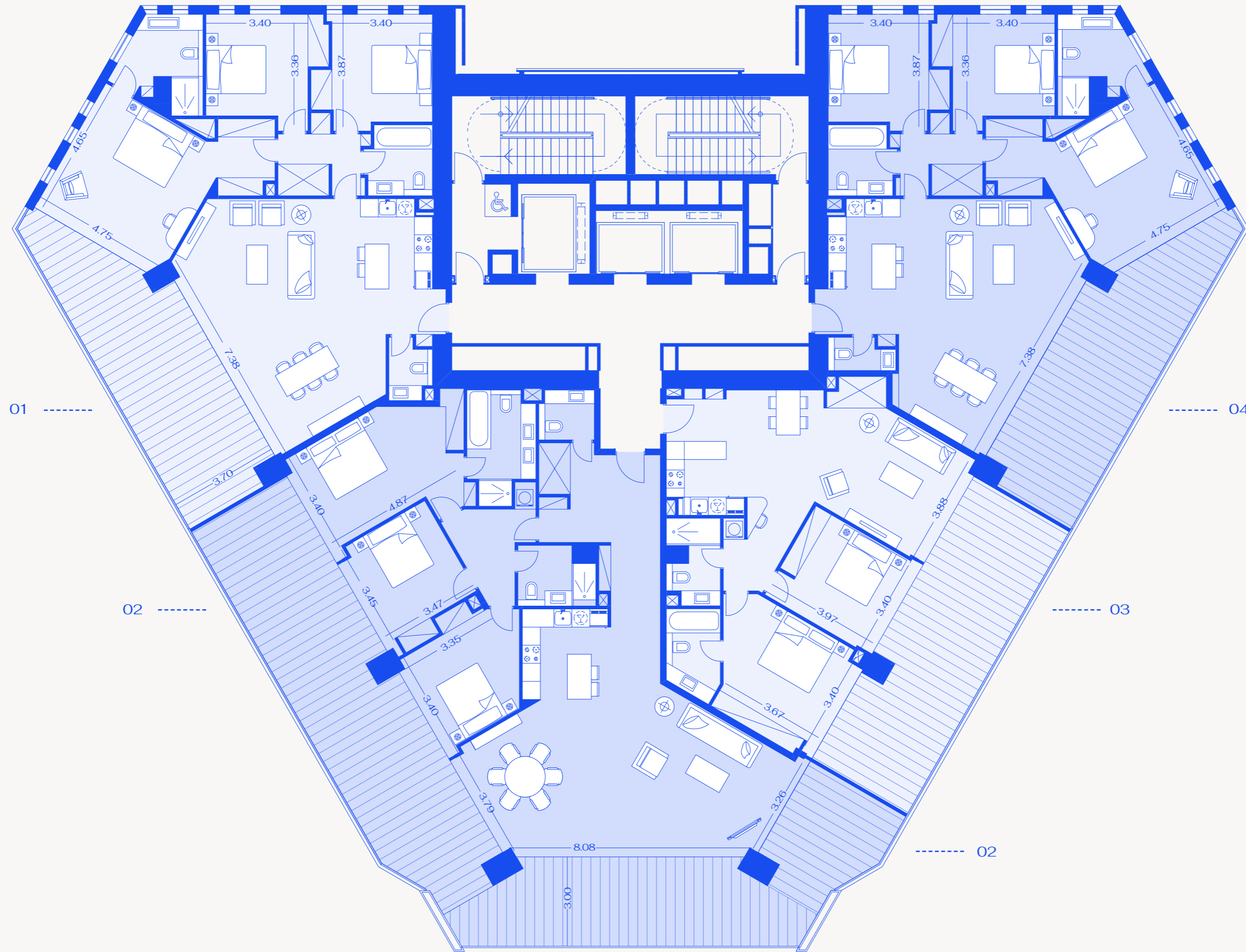
## LEVELS 20-24



Floorplans and dimensions displayed are indicative and may vary from level to level.

# WEST TOWER

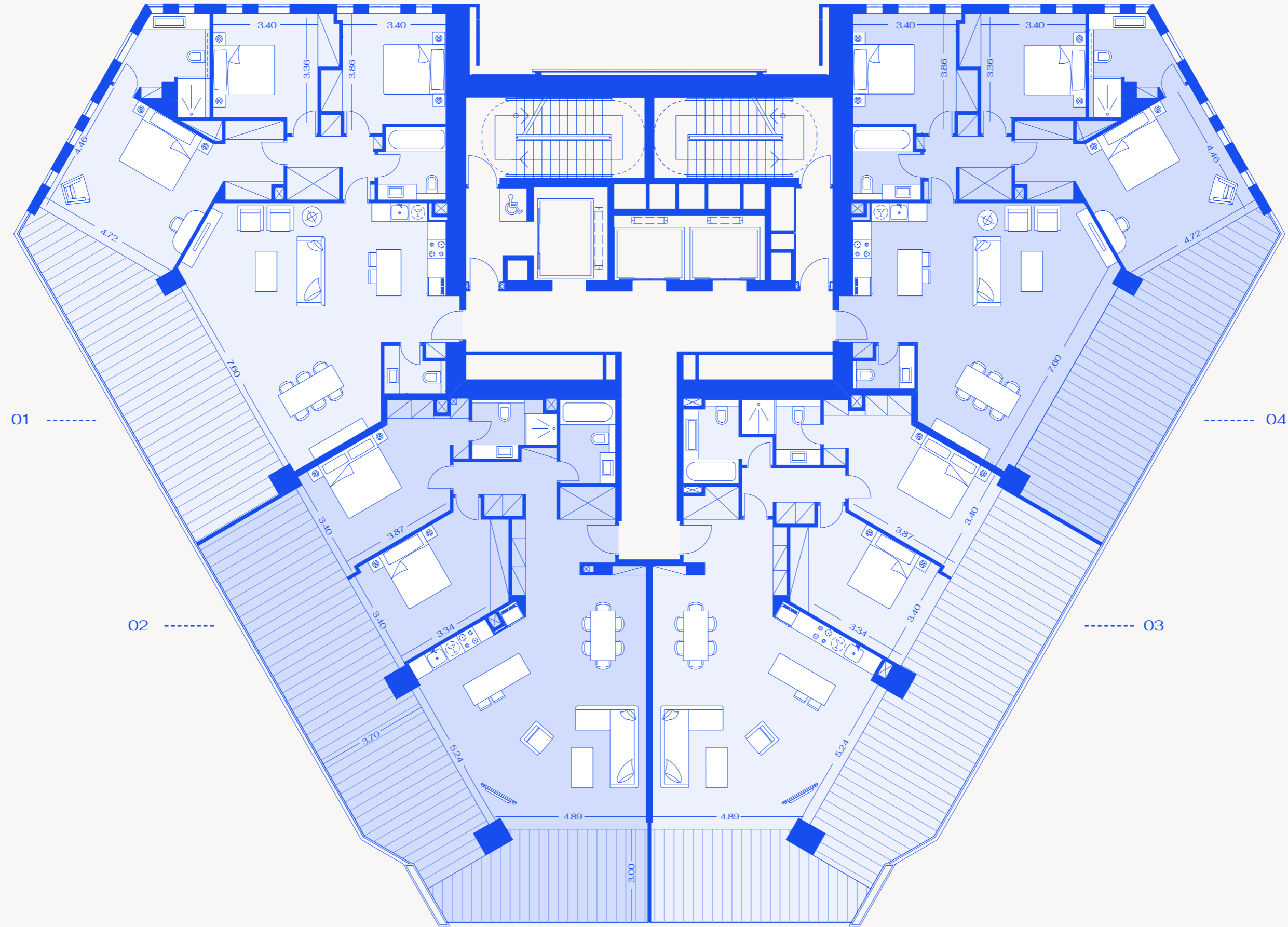
## LEVELS 26—28, 30



Floorplans and dimensions displayed are indicative and may vary from level to level.

# WEST TOWER

## LEVELS 31—32

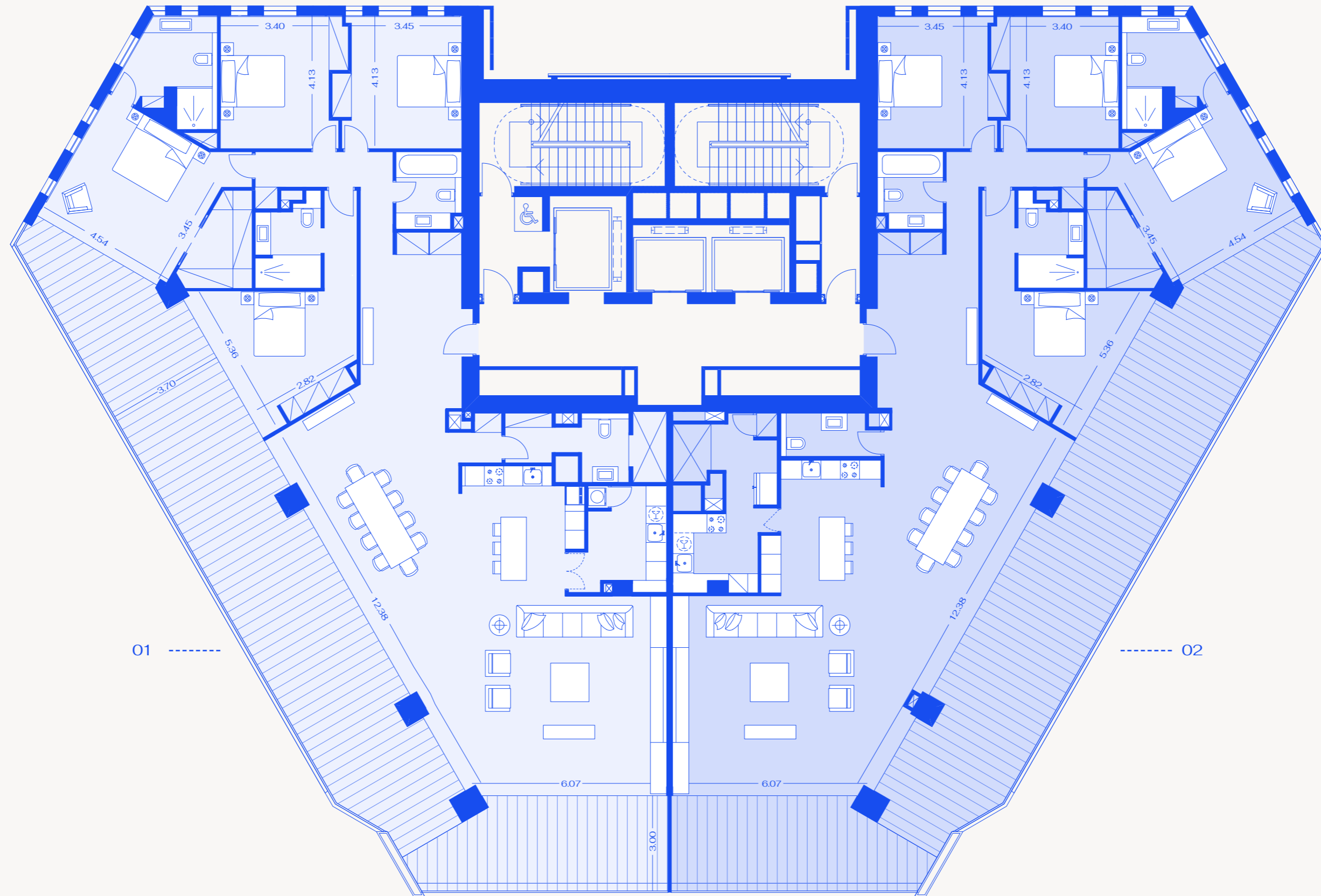


Floorplans and dimensions displayed are indicative and may vary from level to level.



# WEST TOWER

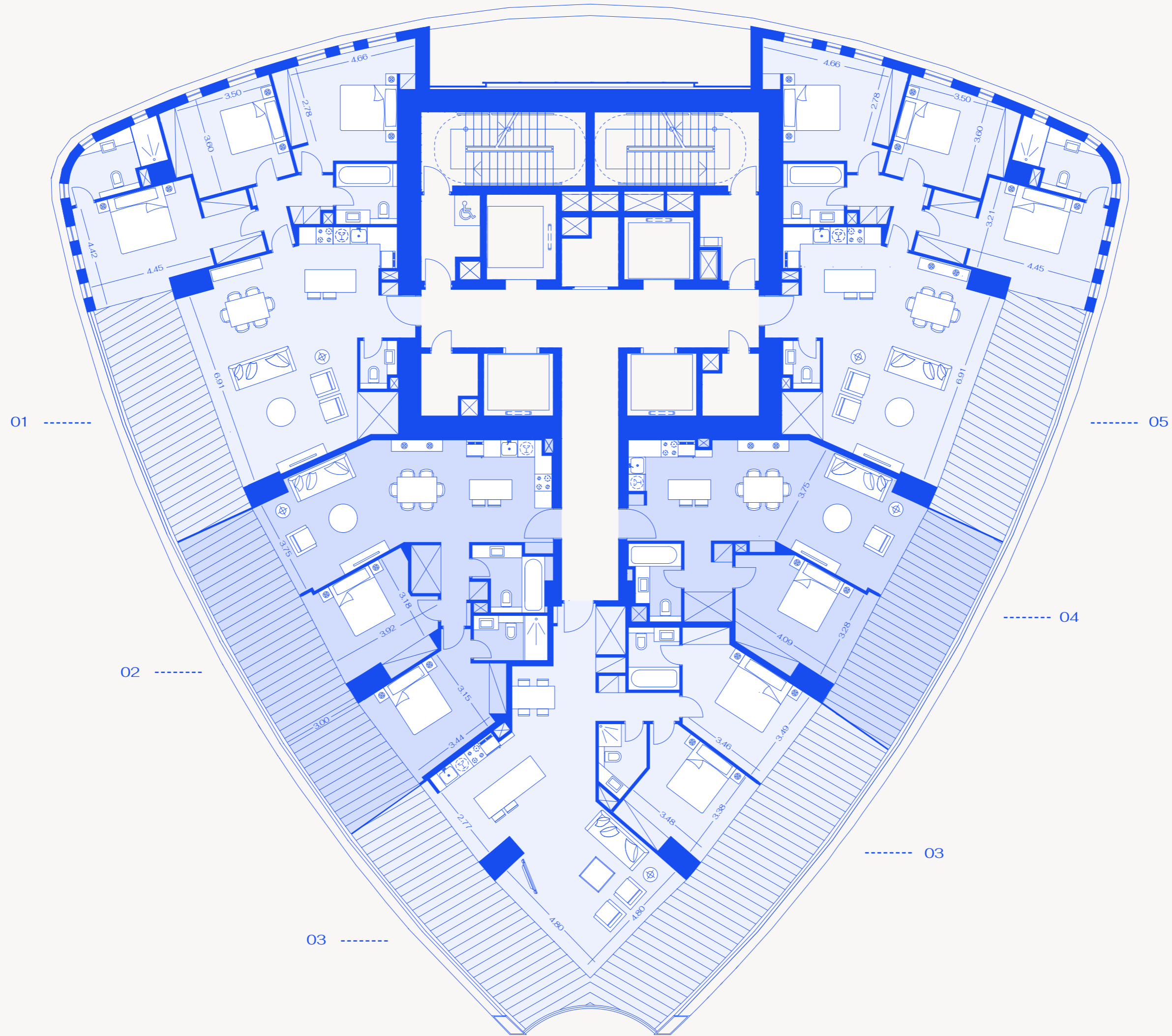
## LEVELS 33—34



Floorplans and dimensions displayed are indicative and may vary from level to level.

# EAST TOWER

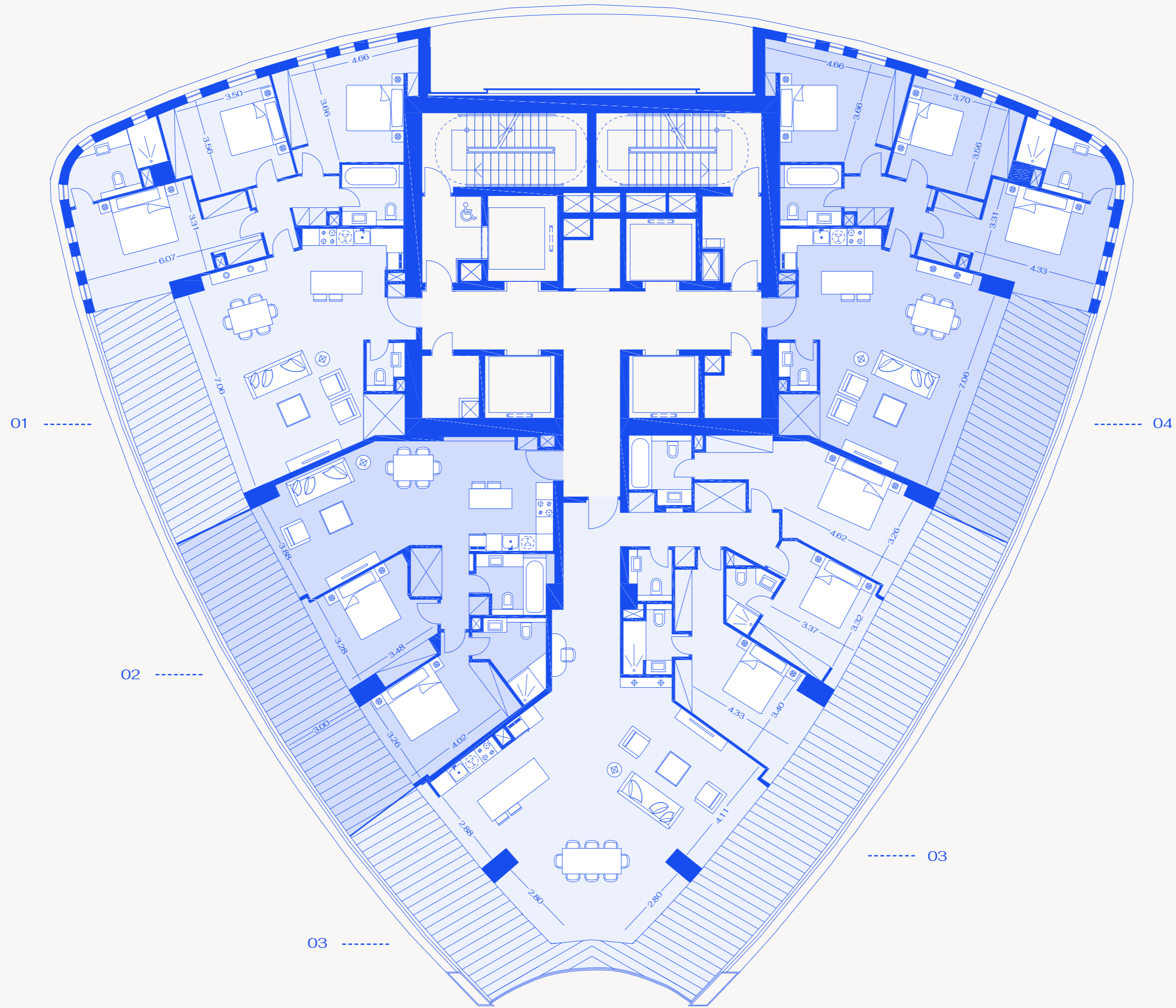
## LEVELS 2–19



Floorplans and dimensions displayed are indicative and may vary from level to level.

# EAST TOWER

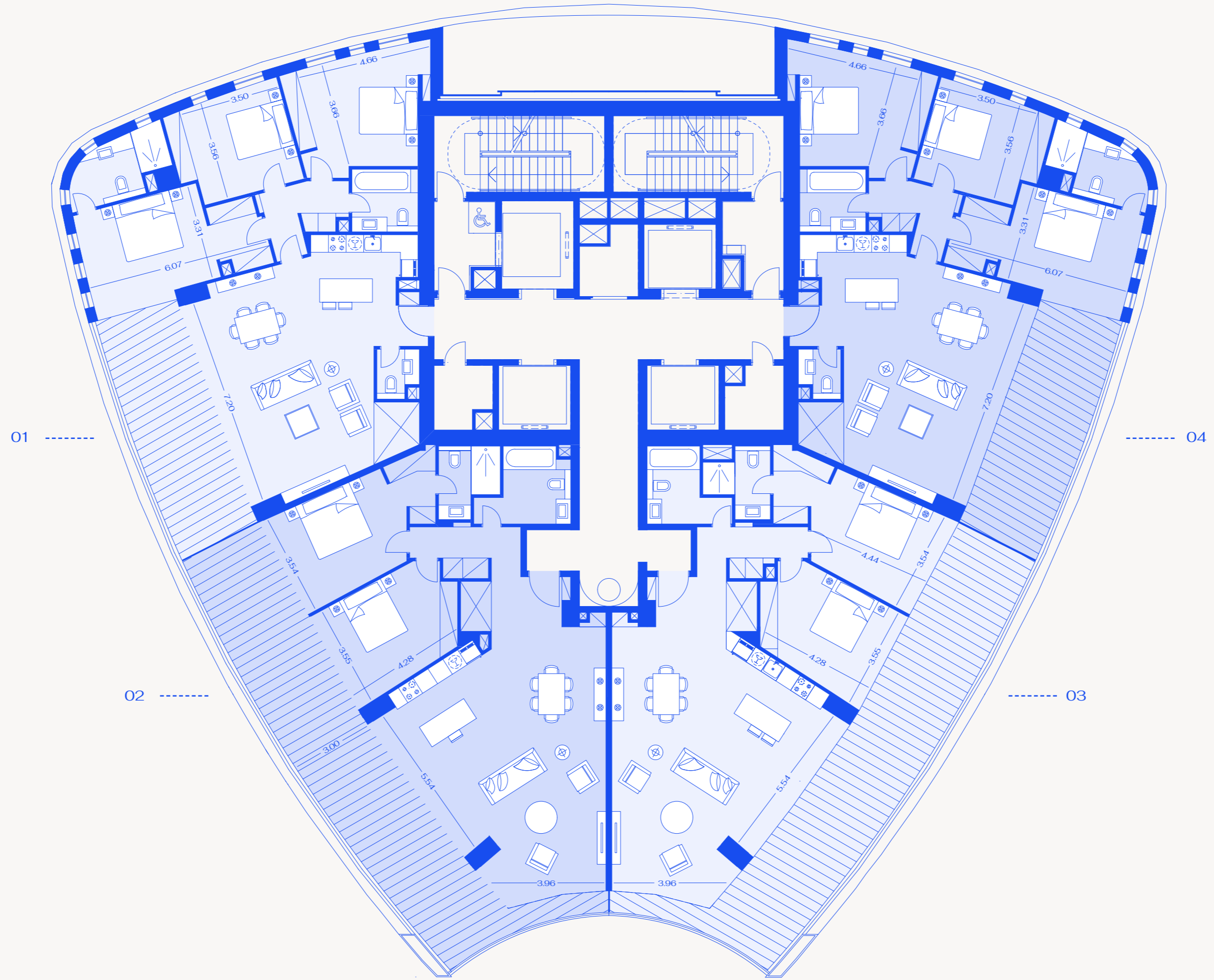
## LEVELS 20—26



Floorplans and dimensions displayed are indicative and may vary from level to level.

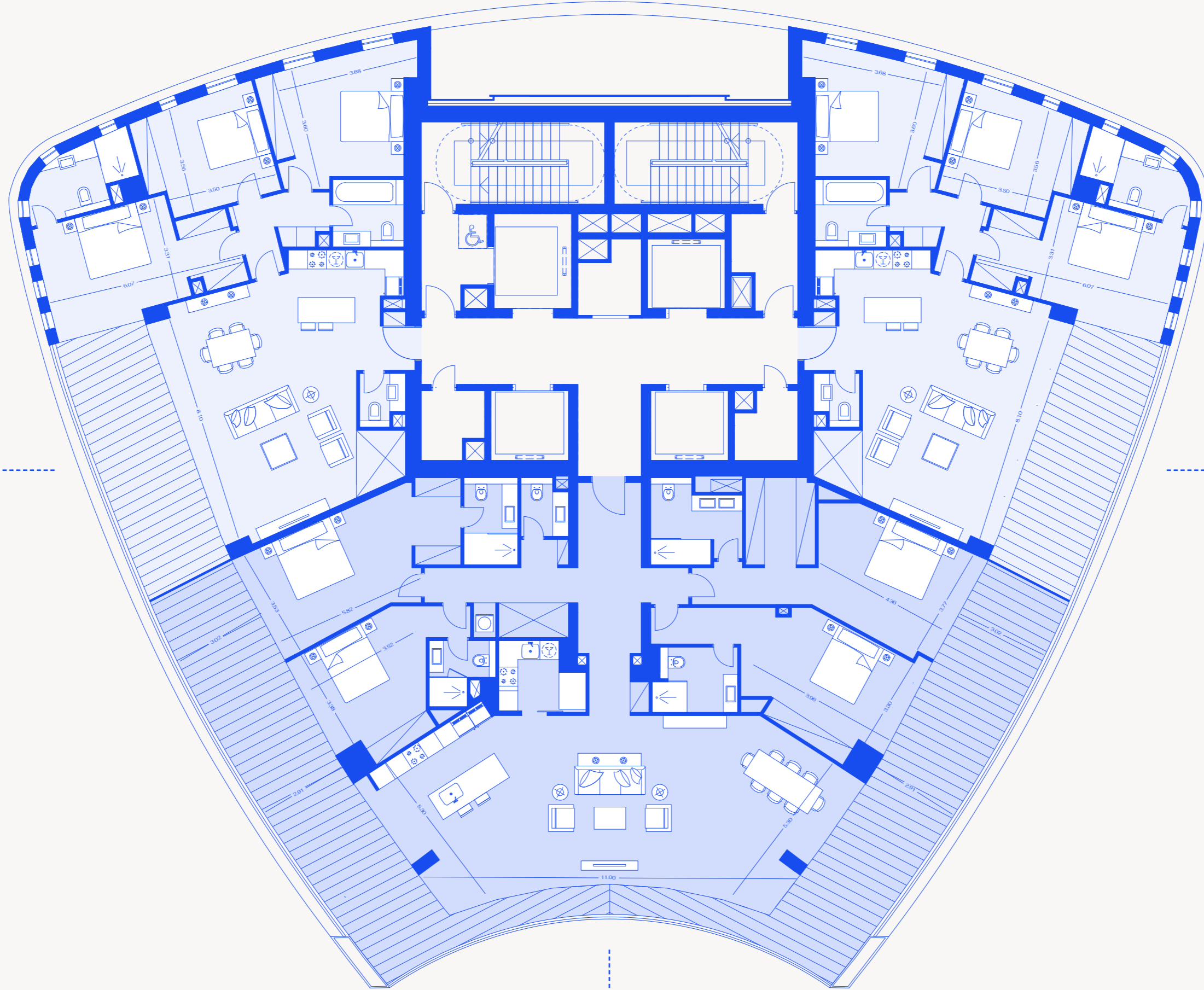
# EAST TOWER

## LEVELS 27—29



Floorplans and dimensions displayed are indicative and may vary from level to level.

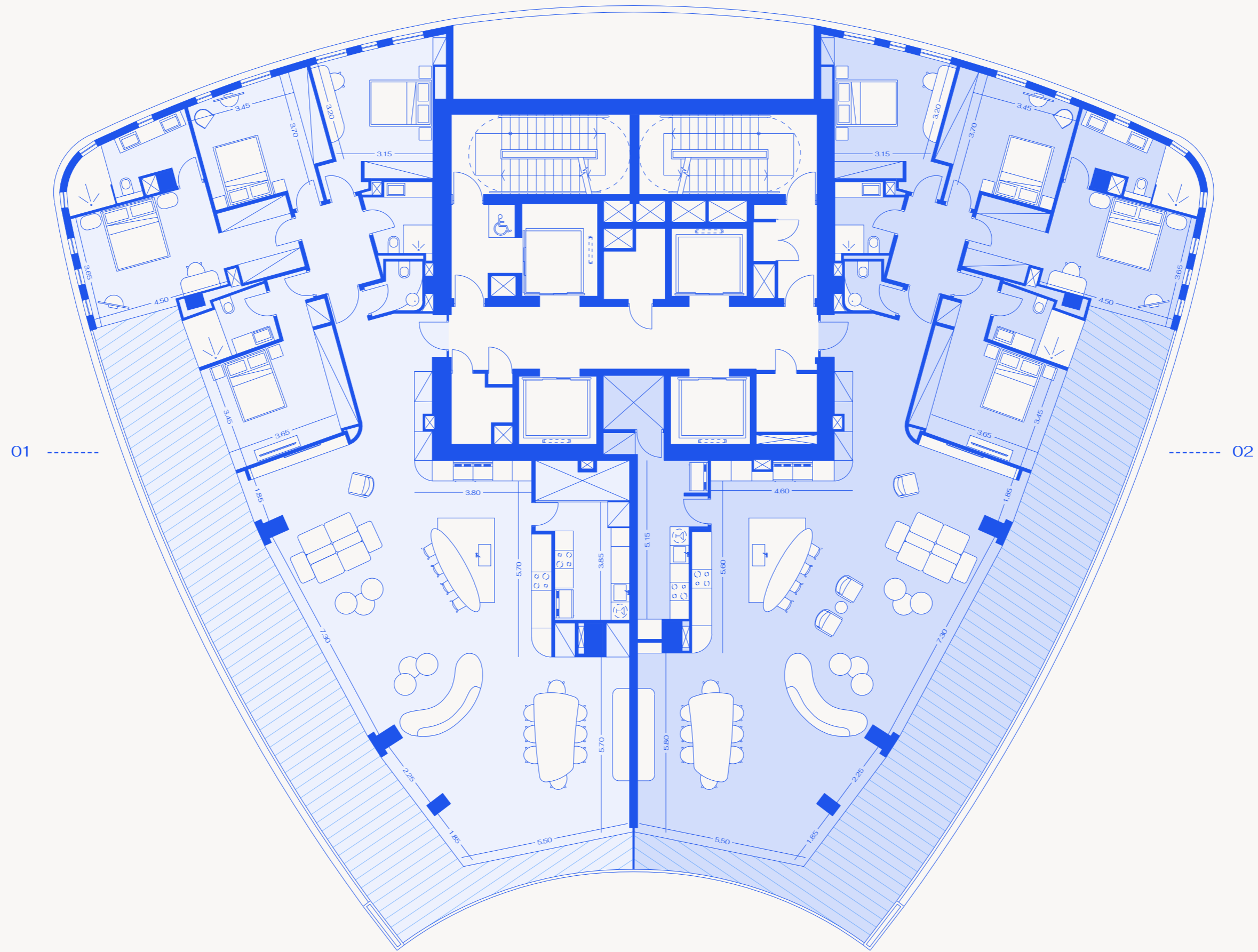
01



02

03

Floorplans and dimensions displayed are indicative and may vary from level to level.

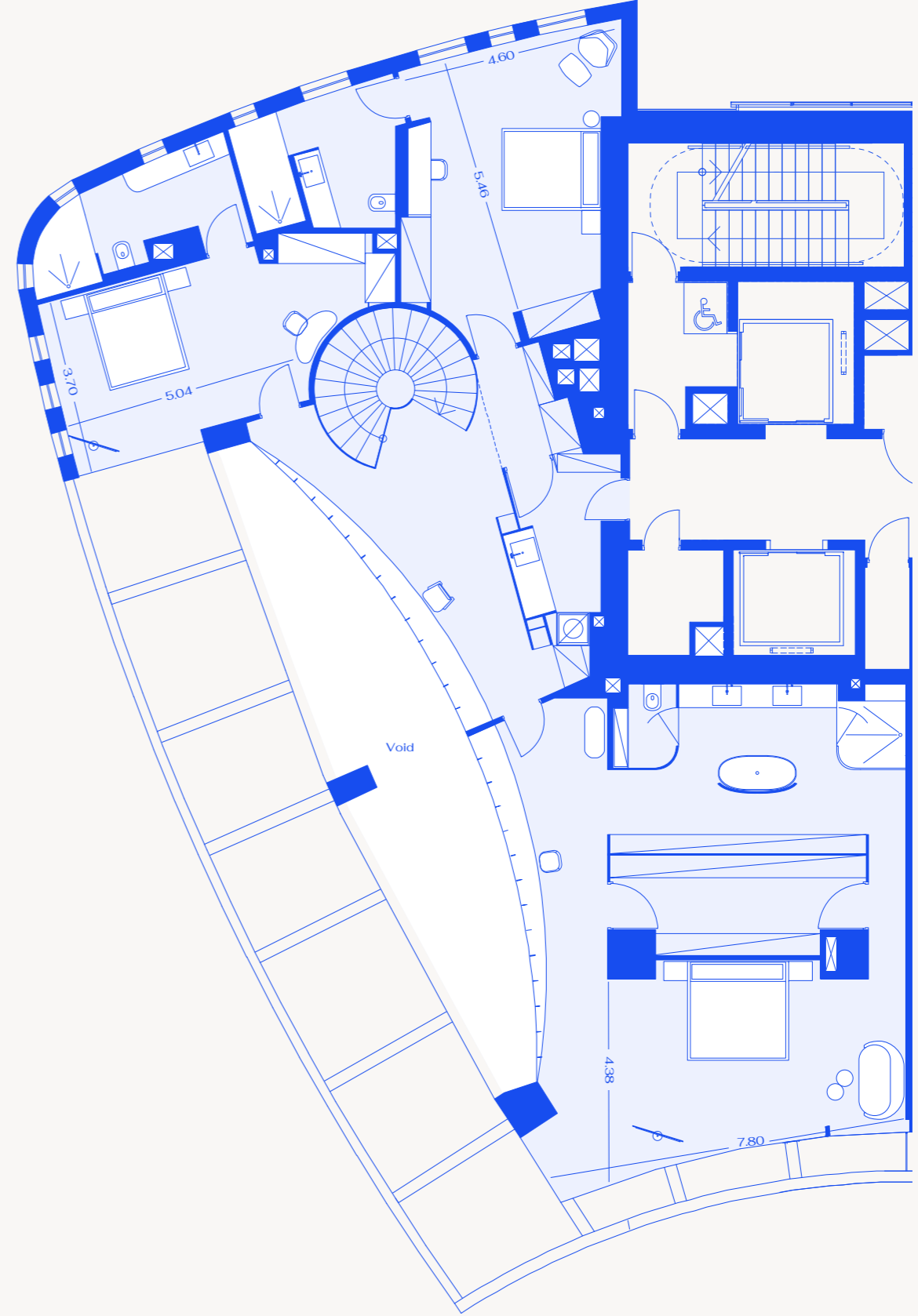
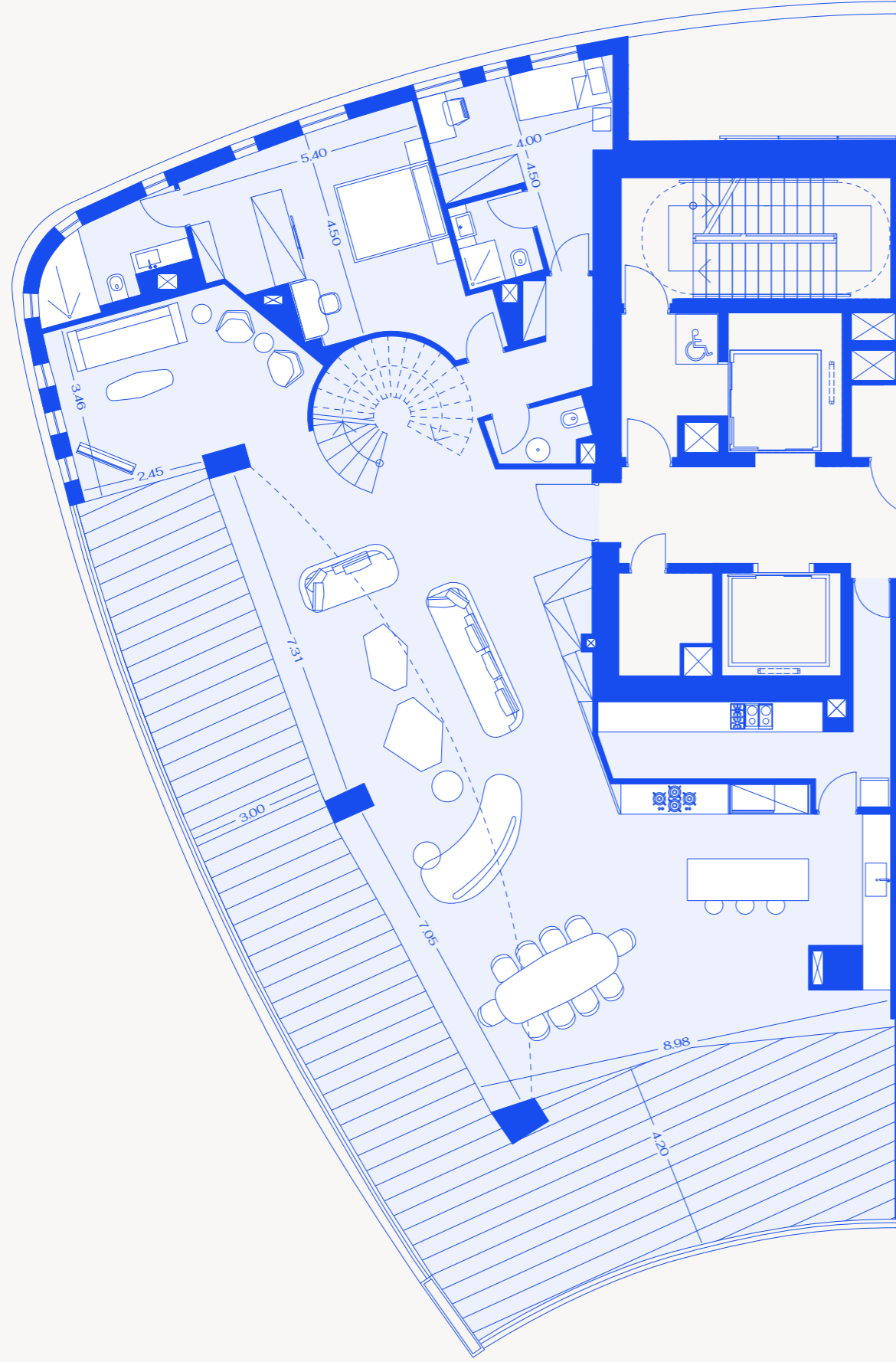


Floorplans and dimensions displayed are indicative and may vary from level to level.



Floorplans and dimensions displayed are indicative and may vary from level to level.

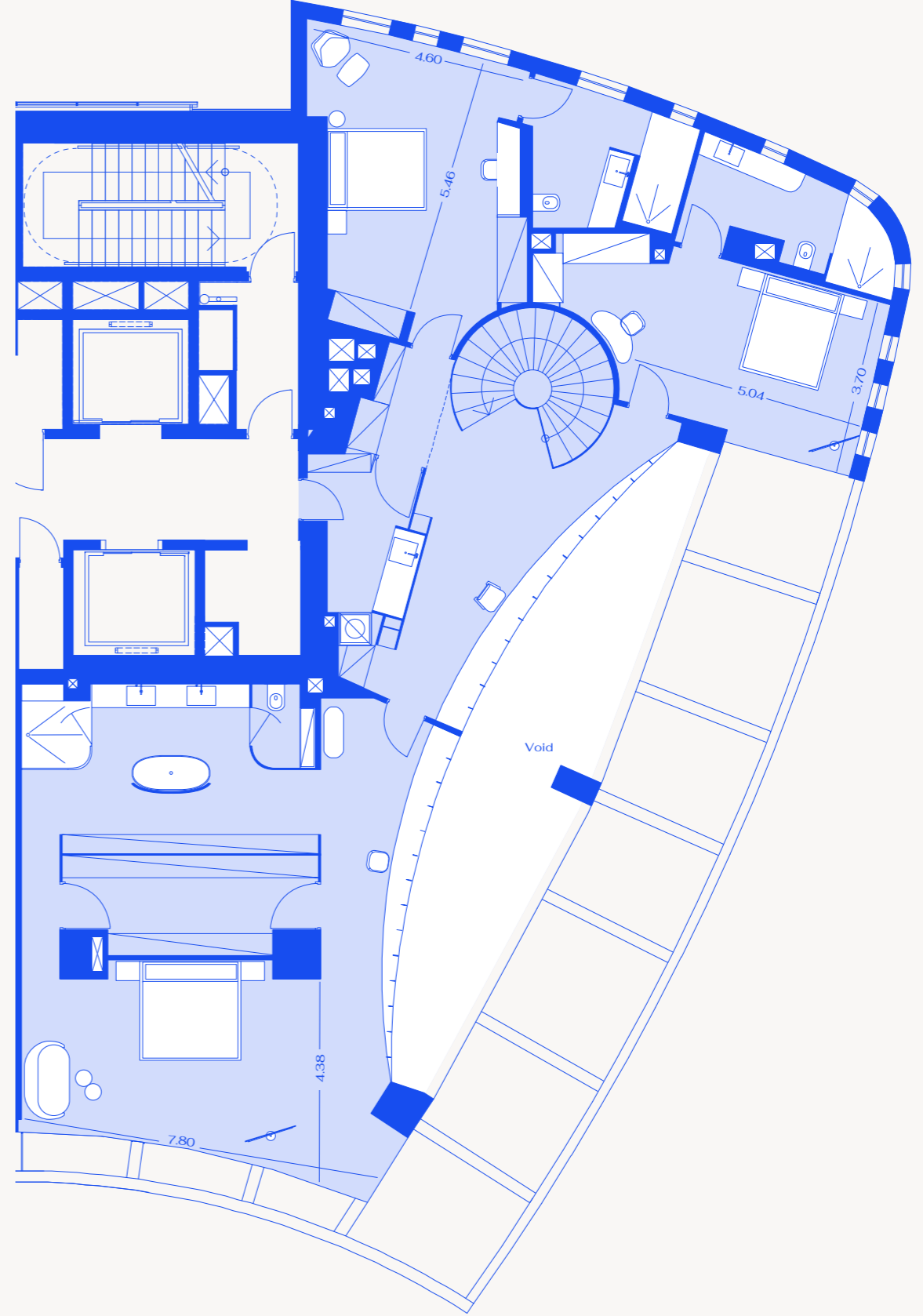
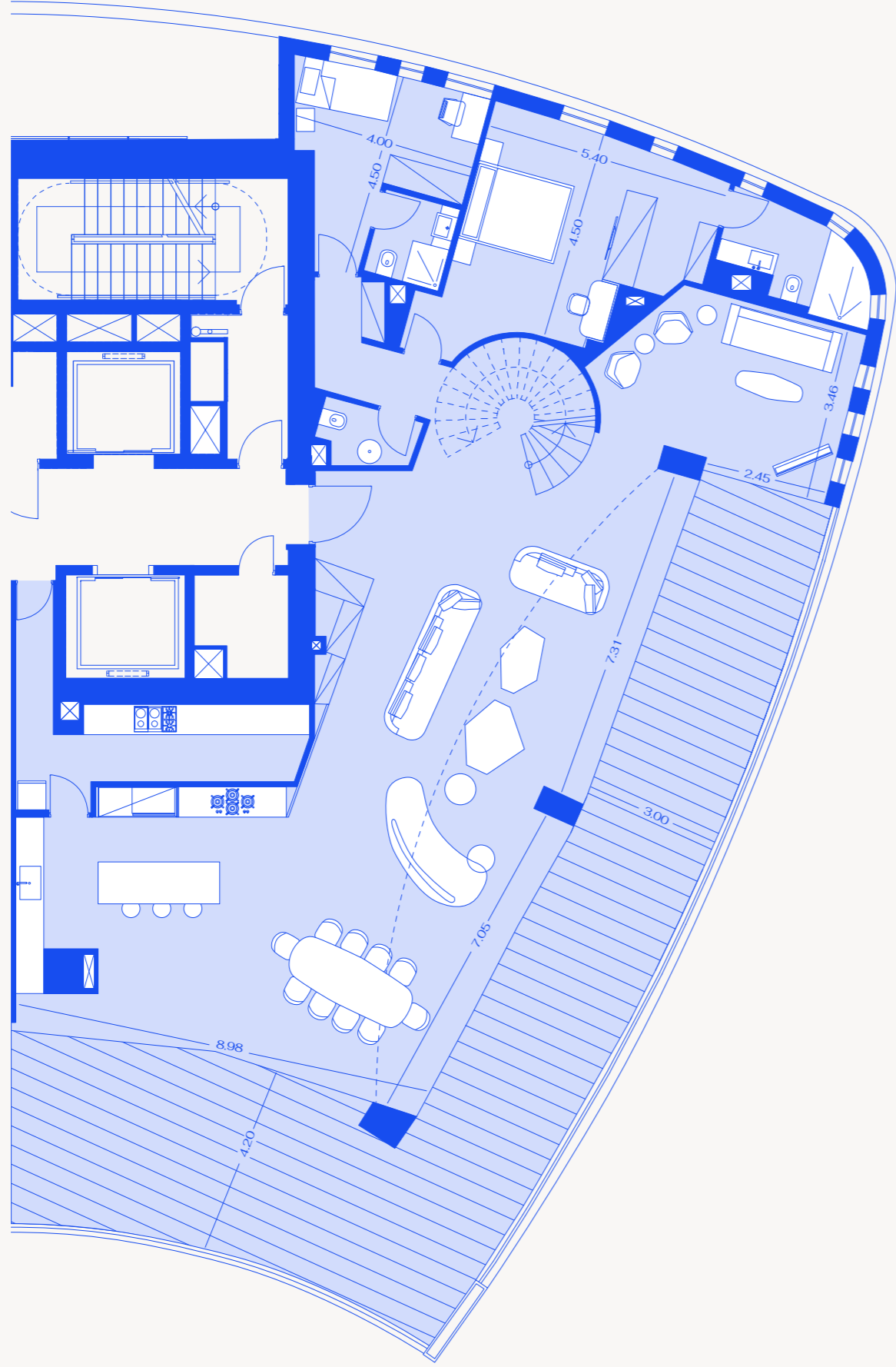
LEVELS 34—35



Floorplans and dimensions displayed are indicative and may vary from level to level.



**LEVELS 34—35**



Floorplans and dimensions displayed are indicative and may vary from level to level.

# NORTH RESIDENCES (A)

## LEVEL 3



Floorplans and dimensions displayed are indicative and may vary from level to level.

# NORTH RESIDENCES (A)

## LEVELS 4-10



Floorplans and dimensions displayed are indicative and may vary from level to level.

# NORTH RESIDENCES (A)

## LEVEL 11



Floorplans and dimensions displayed are indicative and may vary from level to level.

# NORTH RESIDENCES (A)

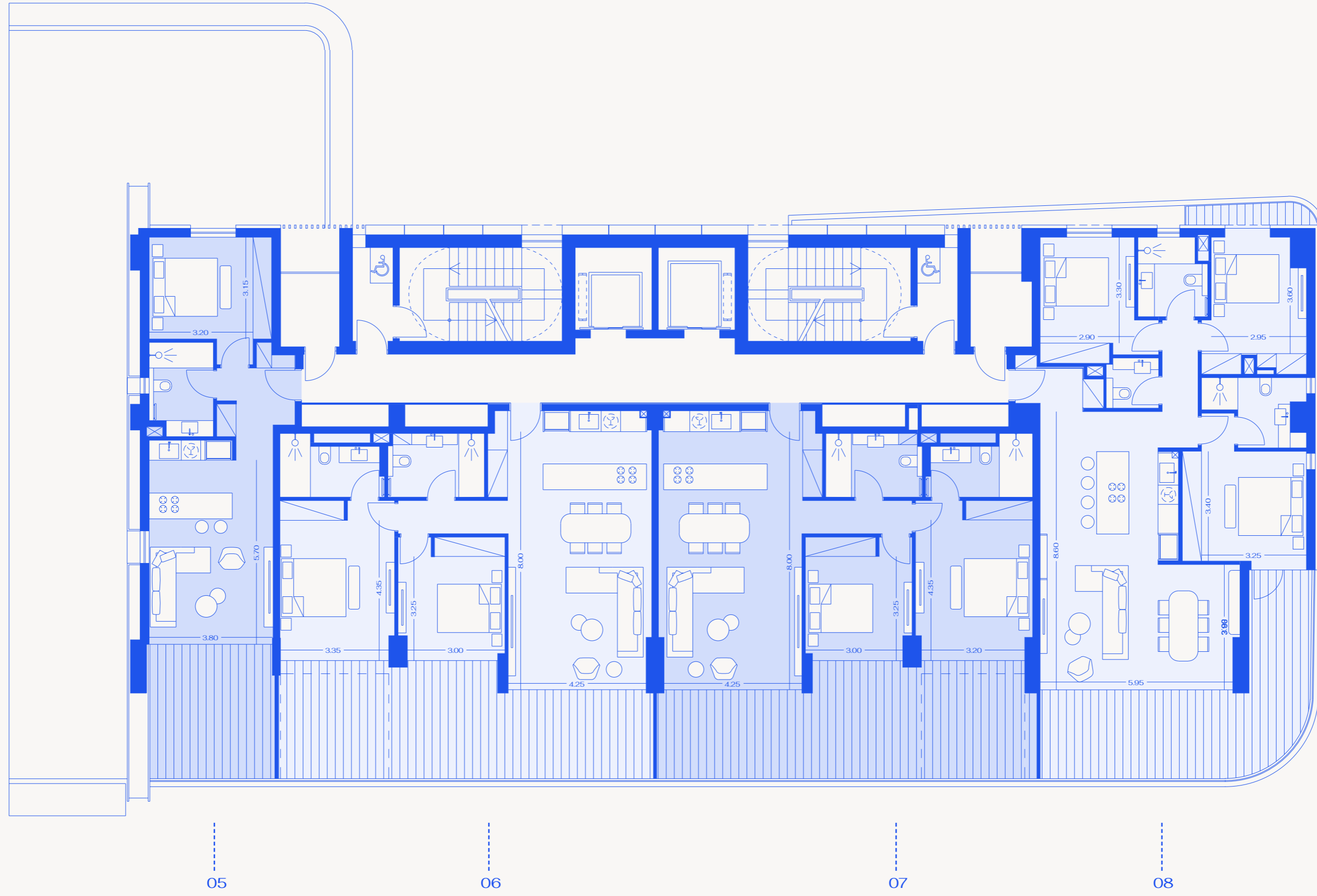
## LEVEL 12



Floorplans and dimensions displayed are indicative and may vary from level to level.

# NORTH RESIDENCES (B)

## LEVEL 3



Floorplans and dimensions displayed are indicative and may vary from level to level.

# NORTH RESIDENCES (B)

## LEVELS 4-10



Floorplans and dimensions displayed are indicative and may vary from level to level.

# NORTH RESIDENCES (B)

## LEVEL 11



Floorplans and dimensions displayed are indicative and may vary from level to level.



# NORTH RESIDENCES (B)

## LEVEL 12



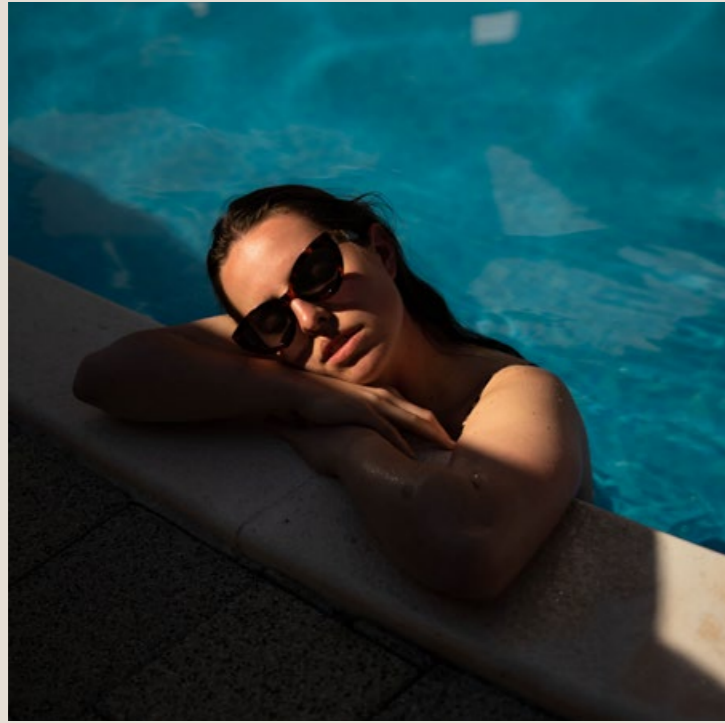
Floorplans and dimensions displayed are indicative and may vary from level to level.



## LIFE AT TRILOGY

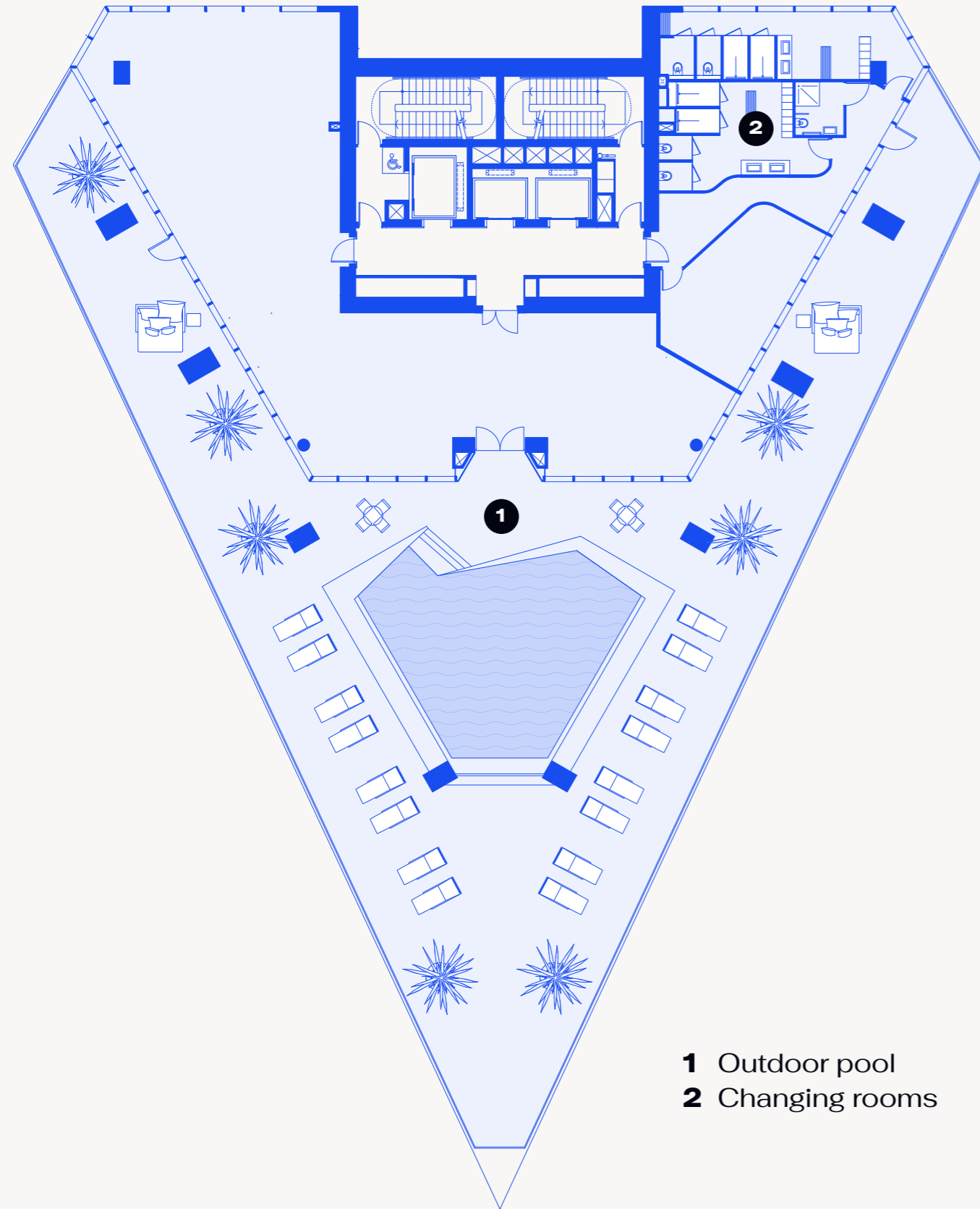
LIVING HERE benefits from a host of resident-only facilities. Our gyms, swimming pools, bars, children's play area and landscaped gardens are reserved exclusively for your private enjoyment.

# FACILITIES

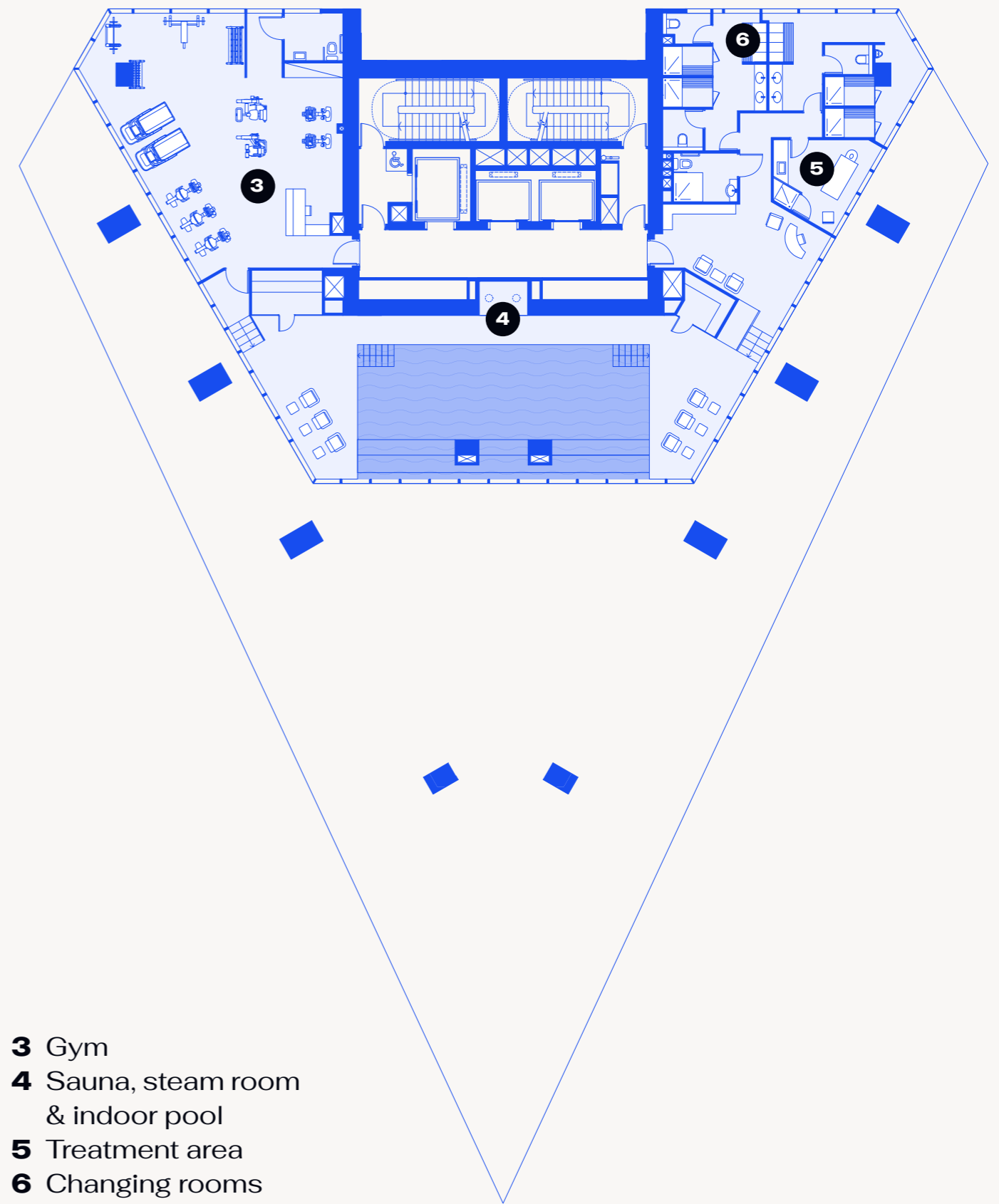


## THE RETREATS

Don't get us wrong, being part of a thriving community is brilliant. It brings energy and diversity to life at Trilogy. But sometimes you just want to escape the rest of the world for a while, to focus on your wellbeing in your own space and time. There's no better place to do it than your very own RESIDENT FACILITIES.

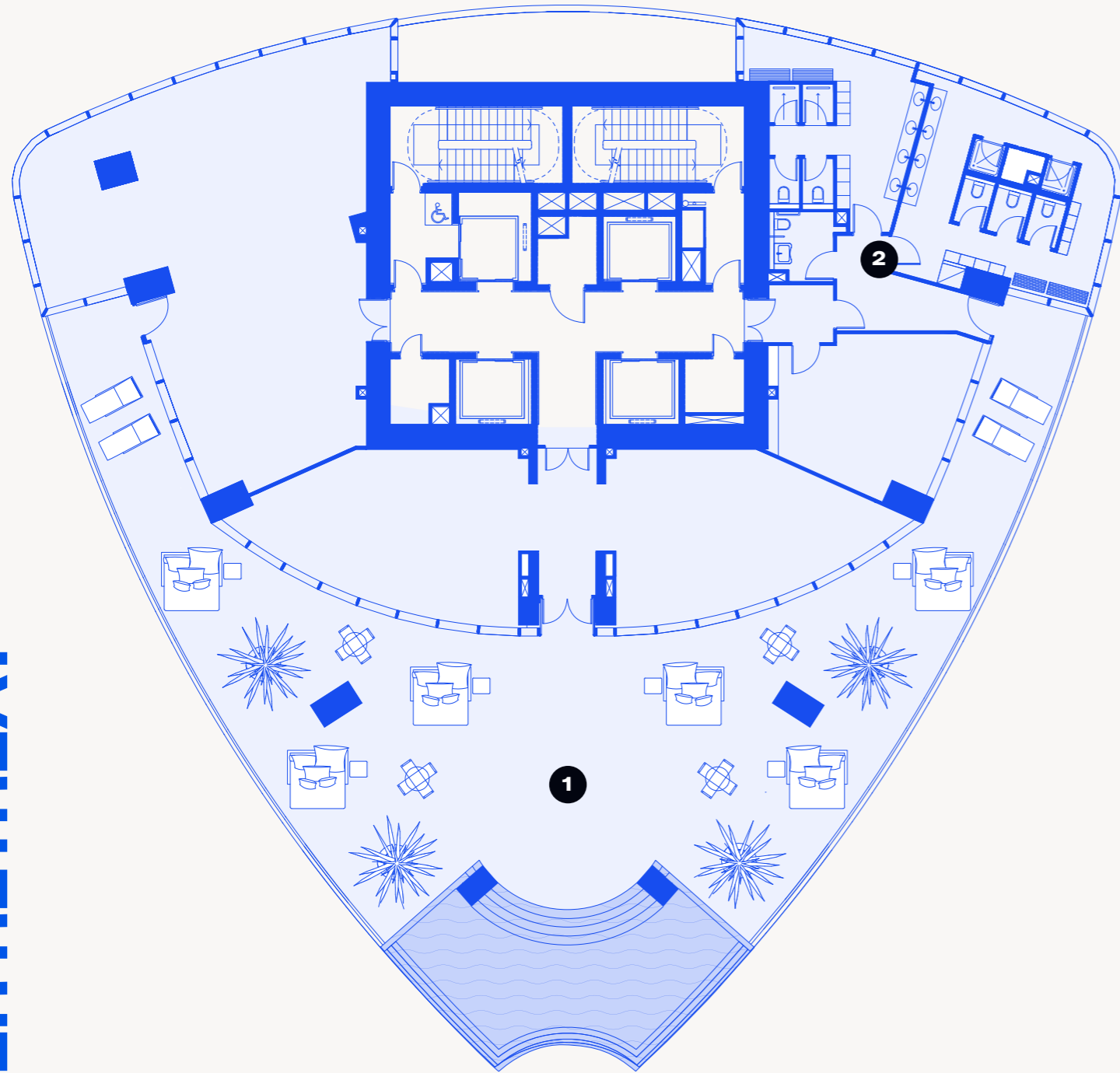


- 1 Outdoor pool
- 2 Changing rooms

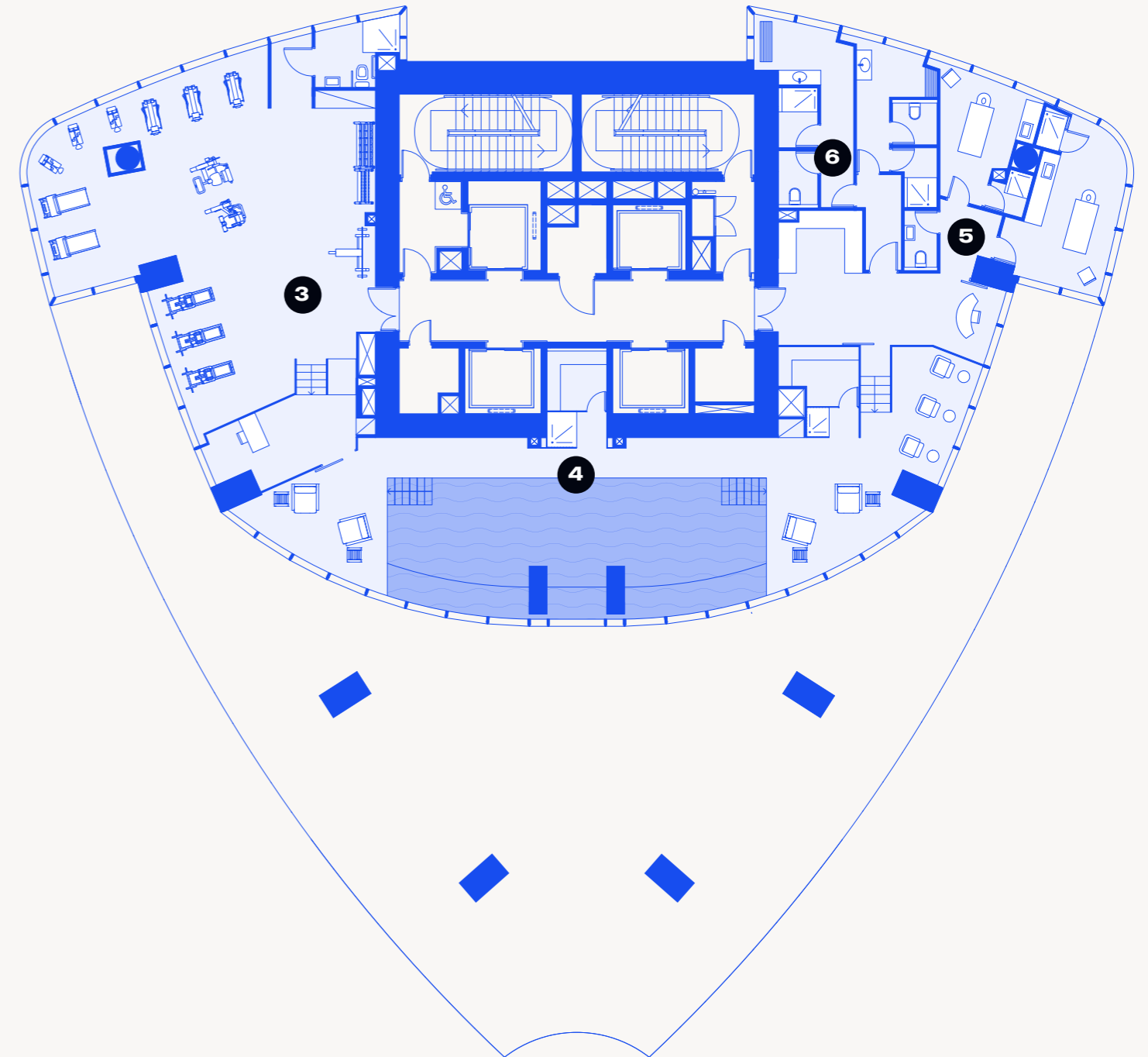


- 3 Gym
- 4 Sauna, steam room & indoor pool
- 5 Treatment area
- 6 Changing rooms

Floorplans and dimensions displayed are indicative and may vary from level to level.

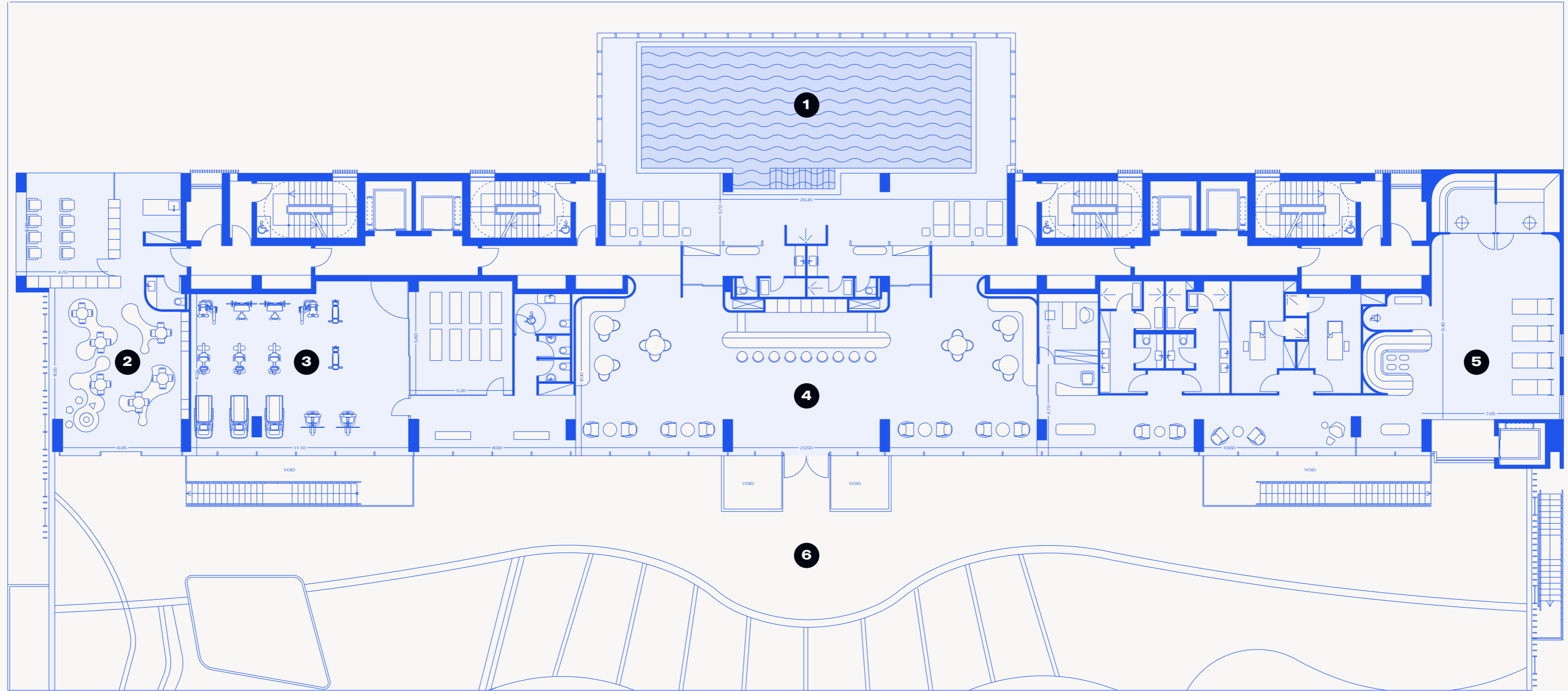


- 1 Outdoor pool
- 2 Changing rooms



- 3 Gym
- 4 Sauna, steam room & indoor pool
- 5 Treatment area
- 6 Changing rooms

Floorplans and dimensions displayed are indicative and may vary from level to level.



- 1** Indoor Pool
- 2** Crèche
- 3** Gym/Training Area

- 4** Residents' Lounge/Bar
- 5** Thermal Rooms & Thermal Spa Area
- 6** Private Oasis

Floorplans and dimensions displayed are indicative and may vary from level to level.



Trilogy was inspired by the site's prime location, great climate conditions and unique brief to deliver exceptional luxury living. Live, work and play in the heart of Limassol with everything you need on your doorstep.

WKK Architects, Trilogy's designers





## THE OASIS

The resident-only outdoor pool and pool bar are beautifully enveloped in a PRIVATE SANCTUARY of lush landscaped gardens, with a children's swimming pool and play area; all with views out to the sea. A few steps into the North Residences offers an extension of the oasis with indoor leisure facilities for all.





# SERVICES

## HERE FOR YOU

THE ULTIMATE DESTINATION deserves the ultimate living experience, right down to the last stitch. Our in-house rental, property and lifestyle management partners at BeCyprus provide round-the-clock care for your peace of mind.



## TIME FOR LIVING

OUR COMMITMENT to our residential owners is second to none. We care for each apartment as if it's our own, offering an unforgettable Trilogy experience to every single guest.

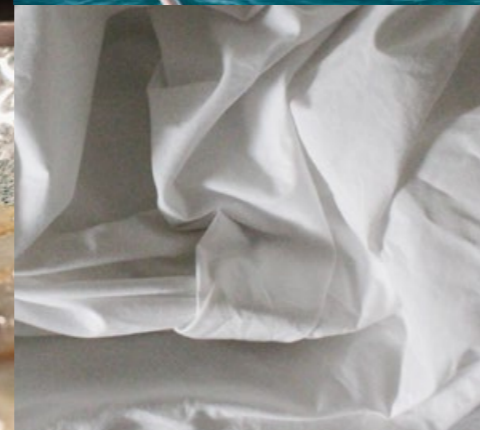
Short-term stays at the destination come with access to our first-class retreats and services. This is the place to be. Come. Visit us. Stay, even if only for a few days.

*BeCyprus*



# TWENTY FOUR SEVEN SERVICE

WE BELIEVE Trilogy residents and guests should be free to enjoy every moment of their time spent here, so our lifestyle and property management service takes care of life's mundane essentials.



TRIOLOGY CONCIERGE has access to anything you need on the island or during your stay at the destination. It's a unique property and lifestyle management service in one.

Our on-site team of fifty professionals offers 24/7 security and support, overseeing the management and maintenance of all facilities and common areas, as well as undertaking rentals and private service requests.

Anything that makes life smoother, simpler and more enjoyable.

- + Exclusive access to restaurants and nightlife
- + Travel planning and ticket booking
- + Golf tee times and tuition arranged, tennis coaching, adventure sports bookings
- + In-residence private chef dining
- + Dry cleaning and clothing alterations
- + Private jet and helicopter charters
- + Yacht charters, jet-ski hire, pleasure craft and on-board dining arranged
- + Child-minding bookings and au pair referrals
- + Airport transfers, helicopter reservations, taxi, private hire and car rental bookings
- + Interior design and décor

*BeCyprus*



## DECADES OF SUCCESS

PART OF THE PRESTIGIOUS Lanitis Group, Cybarco's long history and solid reputation are behind some of the most significant development, infrastructure, building and civil engineering projects both in Cyprus and abroad.

# REPUTATION

# A PROJECT BY CYBARCO, MEMBER OF THE LANITIS GROUP



Amathus Beach Hotel



Lanitis E.C. Holdings Ltd

## CYBARCO DEVELOPMENT

The leading luxury property developer in Cyprus. The company is responsible for bringing many of the island's landmark projects to fruition – including world-class Aphrodite Hills Golf Resort, Sea Gallery Villas, Akamas Bay Villas, The Oval, Limassol Marina and Trilogy.



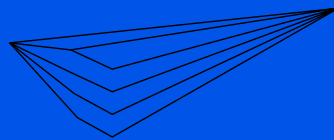
The Oval



Limassol Marina

## CYBARCO CONTRACTING

One of the major contracting companies in Cyprus, with presence in Qatar, Bahrain, Kuwait and Greece. Operations include, among others, luxury housing developments and commercial buildings, terminals and runways, infrastructure, road works, highways and bridges, water dams and power stations.



For further information,  
please contact:

Trilogy Limassol Seafront  
341, 28th October Avenue  
3106 Limassol, Cyprus  
P.O. BOX 58011  
3730 Limassol, Cyprus

T: + 357 25 362 800  
F: + 357 25 365 599  
Freephone: 8000 50 30  
E: [info@trilogylimassol.com](mailto:info@trilogylimassol.com)  
TRIOLOGYLIMASSOL.COM

Disclaimer – This brochure is meant only for promotional purposes and has no legal value. The floorplans, specifications, images and other details herein are only indicative. The Developer/Owner reserves the right to change the plans and specifications without prior notice or obligation. This material does not constitute an offer or contract of any type between the Developer/Owner and the recipient. Any purchase of this development/project shall be governed by the terms and conditions of the contract of sales entered into between the parties, and no detail mentioned in this material shall in any way govern such transaction.